



VOYAGE SELECT

Contemporary Pivot Doors



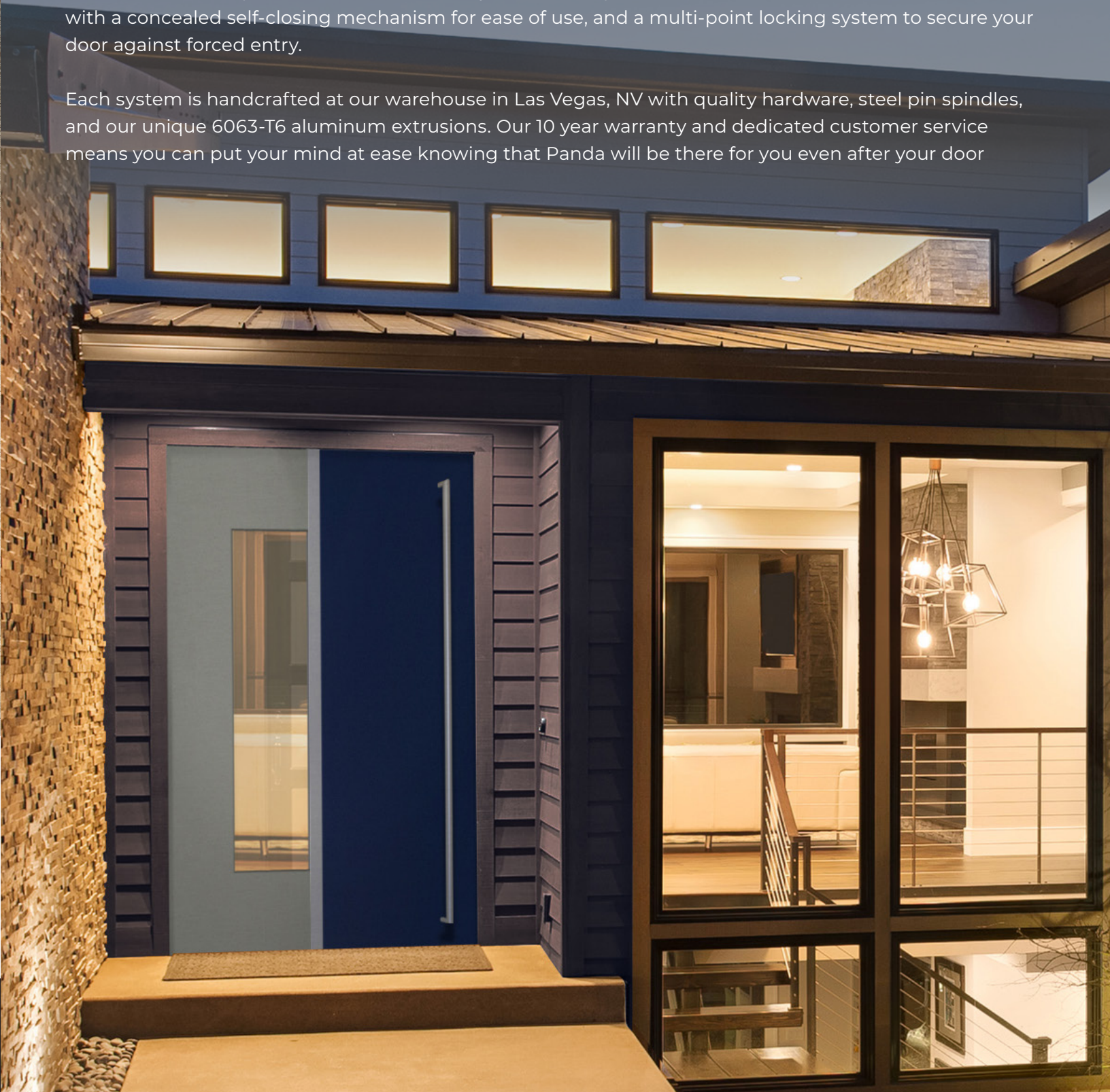
Elegance,
Re-Imagined.

FOR THOSE LOOKING TO MAKE A GOOD IMPRESSION, START WITH AN AWE-INSPIRING ENTRYWAY.

Traditional hinged doors are hung on a frame which limits their size and weight, but pivot doors operate by turning around a spindle (acting as the “pivot” point). This gives the door a sleek, contemporary look while taking the weight off of the door frame. The spindle also allows for larger, heavier panels measuring up to 9’ wide and 18’ tall! Pivots can be a truly breath-taking addition to any project.

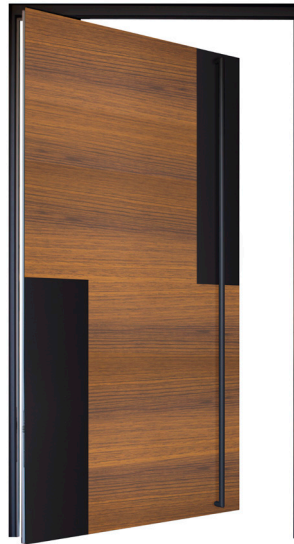
Our pivot doors are not only beautiful, but easy to use as well. Thanks to our state-of-the-art engineering, each door can be operated almost effortlessly, even when panels exceed 300lbs. Each unit is fabricated with a concealed self-closing mechanism for ease of use, and a multi-point locking system to secure your door against forced entry.

Each system is handcrafted at our warehouse in Las Vegas, NV with quality hardware, steel pin spindles, and our unique 6063-T6 aluminum extrusions. Our 10 year warranty and dedicated customer service means you can put your mind at ease knowing that Panda will be there for you even after your door



WE'VE GOT A BEAUTIFUL ARRAY OF STANDARD DESIGNS AND COLORS, BUT ANY DOOR CAN BE CUSTOMIZED.

The interior of the door can be matched to the exterior or your choice of solid color.



PARIS

Timber Teak with Matte Black Details



SYDNEY

Matte Grey with Zebra wood Details



RIO

Available in Matte Black, Matte Grey, and Stone Silver



SEQUOIA

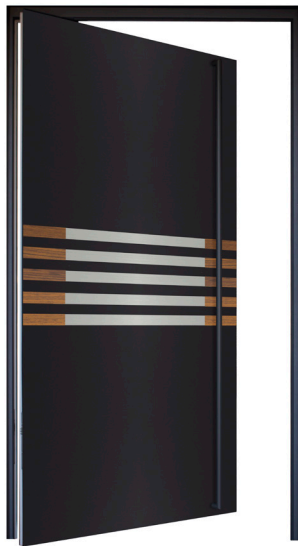
Matte Black with Timber Teak and Aluminum Details



AUCKLAND

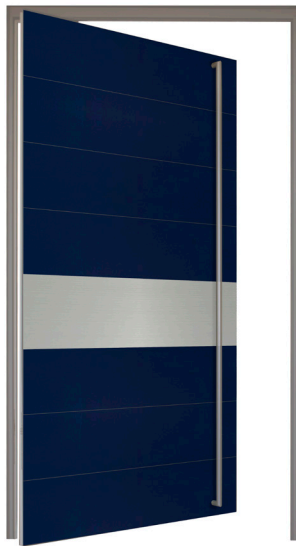
Royal Blue with Glass Lite, Matte Green, and Matte Grey Details

Luxury Doors, Customized.



BONDY

Matte Black with Timber Teak and Aluminum Details



LONDON

Royal Blue with Aluminum Details



PETRA

Slate Grey with Matte Red and Aluminum Details



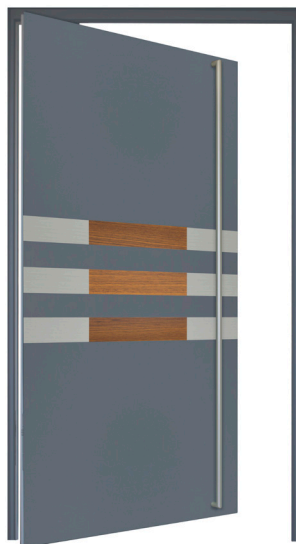
IBIZA

Slate Grey and Timber Teak Details and Glass Lites



MELBOURNE

Matte Black with Timber Teak and Aluminum Details



MAUI

Slate Grey with Timber Teak and Aluminum Details



FIJI

Matte Grey with Zebrawood Details



MILAN

Matte Black with Matte Red Details

PANDA IS DEDICATED TO CUSTOMIZING OUR PRODUCTS TO FIT YOUR NEEDS.

We have a variety of tracks, panel profiles, glass options, and hardware to fit every project. We are excited to take this a step further by offering a variety of customizable exterior finishes that will blend seamlessly into any design. Choose anything from faux wood to prismatic colors! These metal composite sheets are made in the US from largely post-consumer recycled materials.

Choose from one of our beautiful designs or work with our team to create your very own. With over one hundred finishes available, the only limit is your imagination!

HANDLE OPTIONS

ONE (MINIMAL)



Available in Black, Chrome, Brass, and White

SEATTLE (MINIMAL)



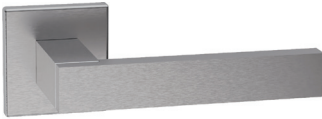
Available in Black and Chrome

WONDER (MINIMAL)



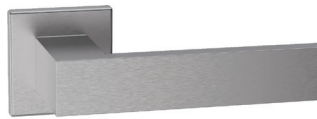
Available in Black, Chrome, and Champagne

PHOENIX (SLIM)



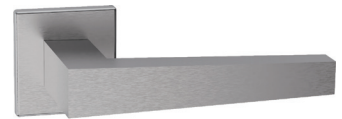
Available in Black and Chrome

SEATTLE (SLIM)



Available in Black and Chrome

SEOUL (SLIM)



Available in Black and Chrome



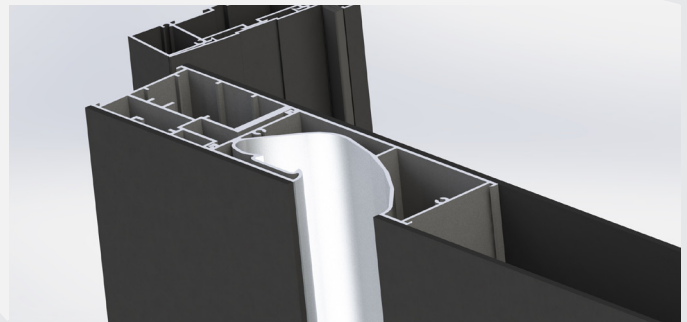
LADDER PULLS

Ladder pulls are standard on door exteriors but can also be added to the interior upon request. Ladder pulls are available as round or square profiles with chrome or black finishes. Can be fitted with a fingerprint lock (up-charge).



LED/RECESSED HANDLE (up-charge)

LED lights can be combined with recessed door handles to provide a smooth, seamless design with an extra “wow” factor. This feature can be placed either horizontally or vertically.



HARDWARE OPTIONS

TYPES OF LOCKS

- **KEYHOLE** (standard)
- **FINGERPRINT LOCK** (up-charge)

- Stainless steel fingerprint lock.
- Available in chrome or black.
- Can be wall mounted or built the exterior ladder pull.
- Up to 99 fingerprints can be stored at a time.



- **KEYPAD LOCK** (up-charge)

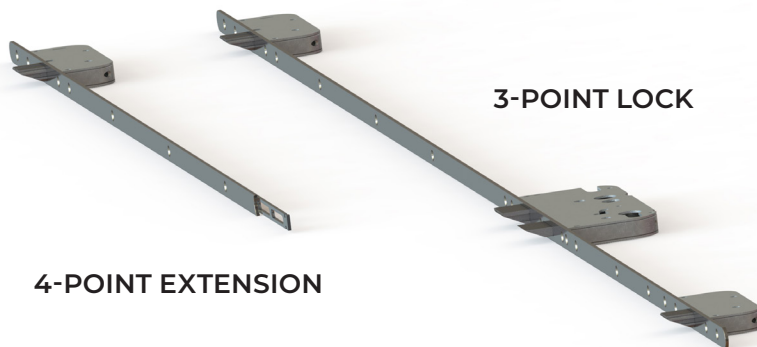
- Digital door lock with a one-step push-pull handle.
- Can be opened with fingerprint scanner, number pad, RFID Card or Tag, or Override Key.
- Robust build with password and encryption protection for extra security.
- User-friendly instruction display.
- Silent mode for quiet entry/exit.



LOCKING MECHANISMS

- **ROLLER LOCK**
- **LATCH LOCK**
- **MULTI-POINT LOCK**

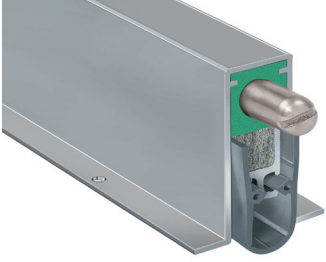
- Most robust lock available.
- Elegant brushed chrome finish.
- Added protection against forced entry.
- Typically a 3-point lock, but a 4th point can be added for extra-large doors.



3-POINT LOCK

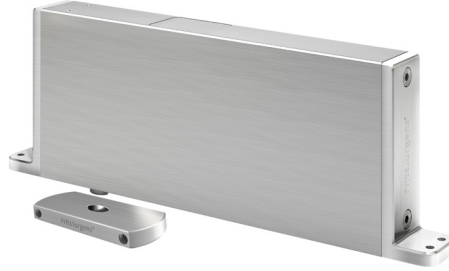
4-POINT EXTENSION

ADDITIONAL FEATURES



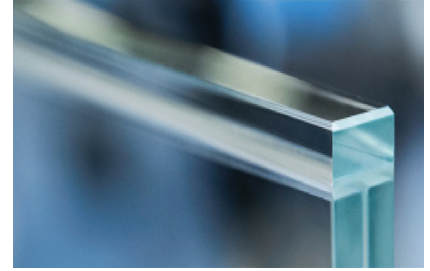
DROP SEAL FEATURE (standard)

- Offers improved sealing capabilities without causing drag on the door.
- Self actuating when in the closed position.
- Adjustable.
- Can improve a door's weatherability.
- Can fit any size door.



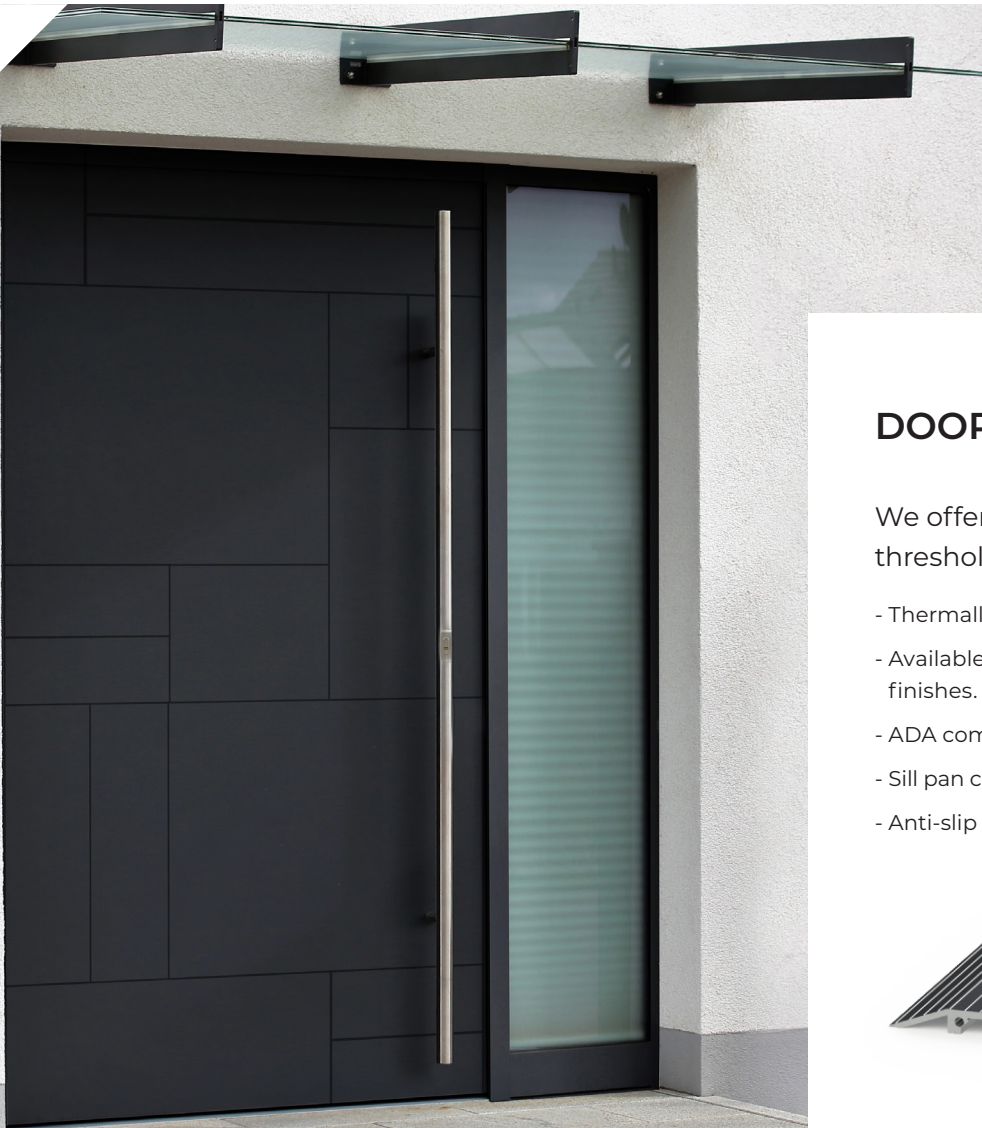
FLOOR CLOSURE (up-charge)

- Integrated to the door.
- Made of high-performance, corrosion resistant material.
- Floor plate can be applied to any surface.
- Self-closing with adjustable closing speeds and multiple hold positions.
- ADA compliant
- Comes in Stainless steel or black.



GLASS OPTIONS (up-charge)

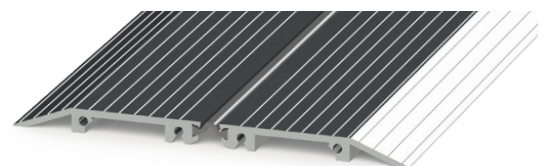
- 1" overall profile with tempered, non-tinted glass.
- 2 Energy efficient options: Cardinal 270 or Cardinal 366 (up-charge),
- Argon option (up-charge).



DOOR THRESHOLD

We offer an ADA Compliant surface threshold option.

- Thermally broken.
- Available in clear and dark bronze anodized finishes.
- ADA compliant.
- Sill pan compatible for better water performance.
- Anti-slip aluminum extrusion design.

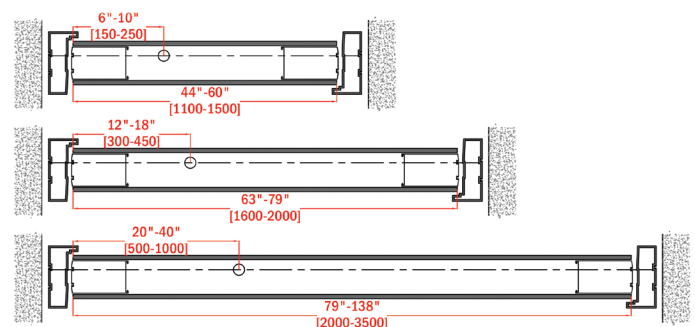
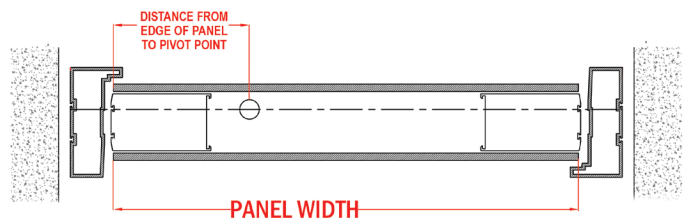




PIVOT SIZING

Panda Windows and Doors is known for creating the largest doors in the industry. Our Voyage Select Contemporary Pivot Doors are no exception. Thanks to our innovative frames and hardware, we can create pivots up to 9ft wide and 18 ft tall with a maximum weight of 750lbs!

When deciding on the size of your new pivot door, it is critical to work with an engineer that specializes in pivot doors like those on our team at Panda. Remember, the larger the door, the closer the pivot point must be to its center to maintain a balanced and smooth operation. When building pivot doors, engineering experience is key to making your new system operate like a sophisticated work of art.





Bamboo

Oriental Cane

Maple

Walnut

Teak

Mahogany

Zebrawood



CMX Metallic Champagne

DCX Metallic Copper

MBX Metallic Bronze

PEX Pewter

SMX Metallic Silver

TBX Metallic Silver

QCO Rusted Steel



BSX Metallic Silver

CLR Clear

CMR Champagne

LBR Light Bronze

MBR Medium Bronze

DBR Dark Bronze

BLK Black



AMOX Blue w/ Clear Coat

ABE Blue

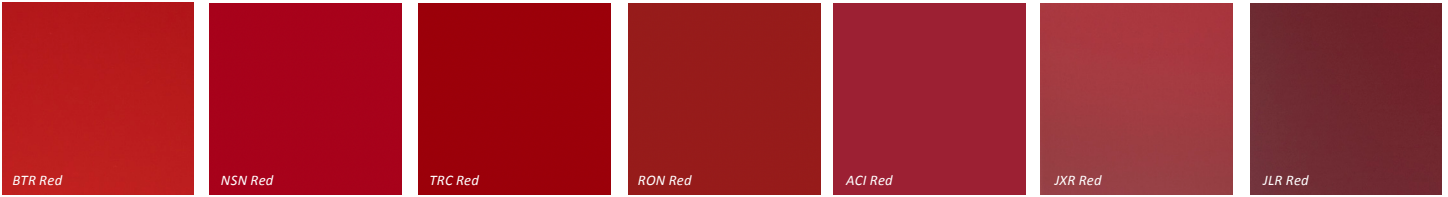
HNB Blue

CBF Blue

AUB Blue

AYW Yellow

TDR Green



BTR Red

NSN Red

TRC Red

RON Red

ACI Red

JXR Red

JLR Red



SAW White

CPW White

CRT Oyster

AGT Grey

BGY Grey

AGT Grey

BSM Black Slate Matte



OPT Mica Platinum

MNC Mica Clear

MZG Mica Grey

MFS Mica Grey

MCU Mica Champagne

RVW White

HWH White



BNT Bone White

MST Mist White

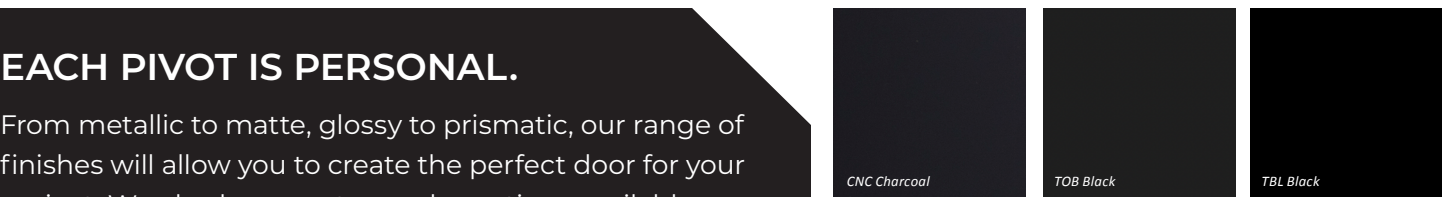
CVG Grey

JBR Bronze

LIN Brown

Don Grey

BLX Black



CNC Charcoal

TOB Black

TBL Black

EACH PIVOT IS PERSONAL.

From metallic to matte, glossy to prismatic, our range of finishes will allow you to create the perfect door for your project. We also have custom color options available.



THE ART OF LUXURY



3415 Bellington Road
N. Las Vegas, NV 89030
(702) 643-5700

www.panda-windows.com